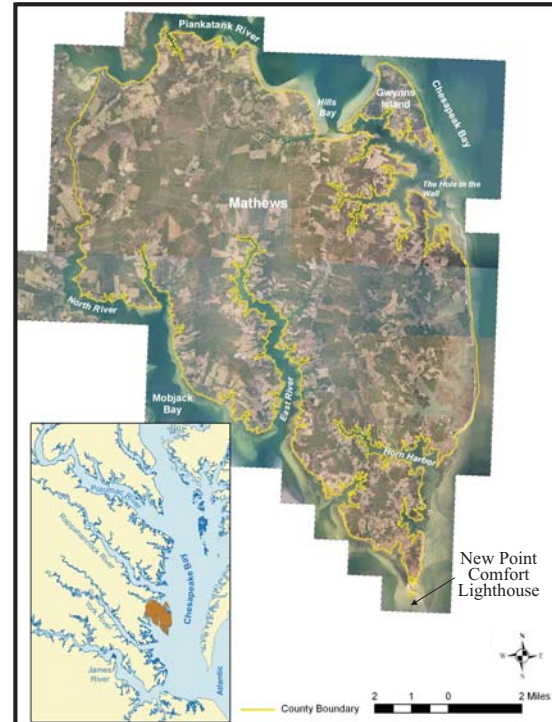


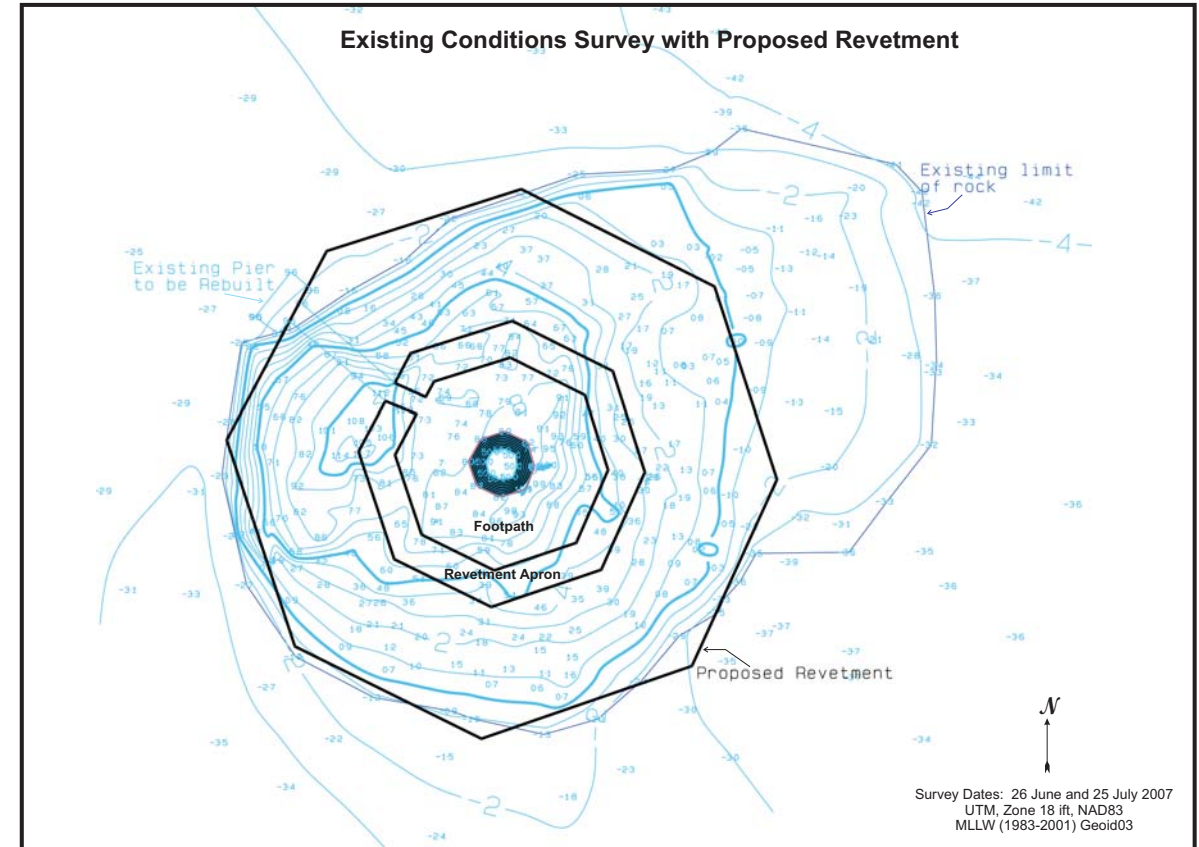
# New Point Comfort Lighthouse Preliminary Shore Stabilization Plan



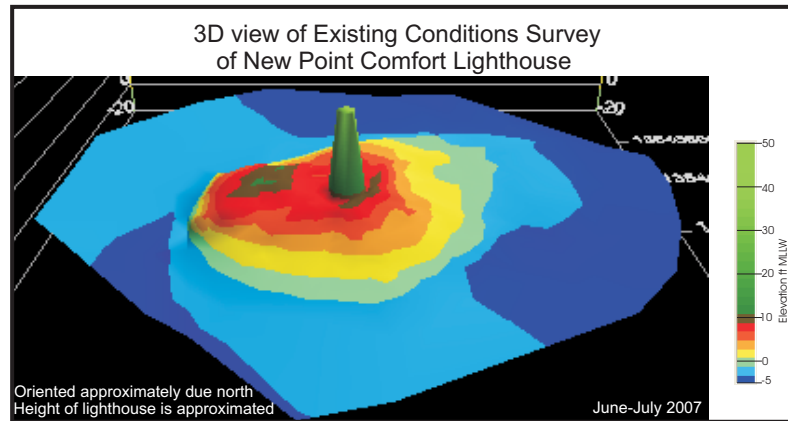
Location of New Point Comfort Lighthouse and Mathews County within the Chesapeake Bay Estuarine System

The New Point Comfort Lighthouse was constructed on an island of more than 230 acres in 1804 and went into operation January 17, 1805. The United States government purchased two acres for the lighthouse site. Since then, time and tide have worn away the sandy coast surrounding the lighthouse. Erosion was first noted following the War of 1812, and over time, many efforts have been made to control the process. The last major effort was made in 1981 when rocks were placed around the perimeter of the lighthouse. Constant wave action by hurricanes and northeasters continue to batter the structure.

Today the lighthouse is in a state of disrepair. In order to provide long-term shore protection, a rock revetment is proposed. This revetment will mimic the lighthouse in planview and provide a working area around the island for lighthouse restoration and a scenic footpath.



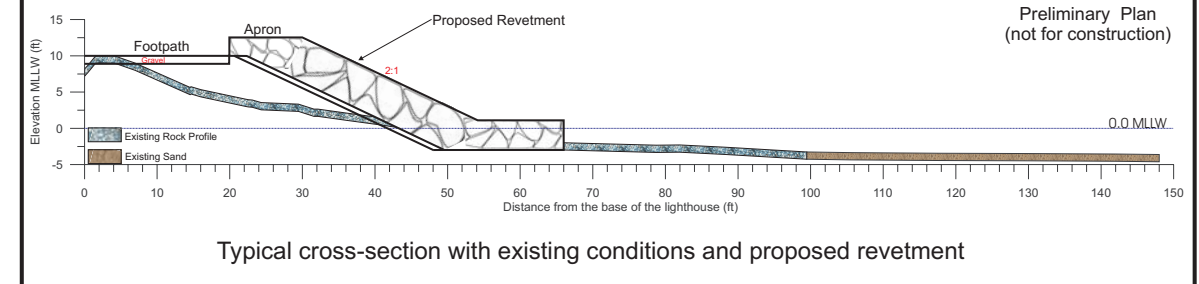
Survey Dates: 26 June and 25 July 2007  
UTM, Zone 18 ft, NAD83  
MLLW (1983-2001) Geoid03



Oriented approximately due north  
Height of lighthouse is approximated  
June-July 2007



Photo Date: 7 Aug 2007



Typical cross-section with existing conditions and proposed revetment

Preliminary Plan  
(not for construction)

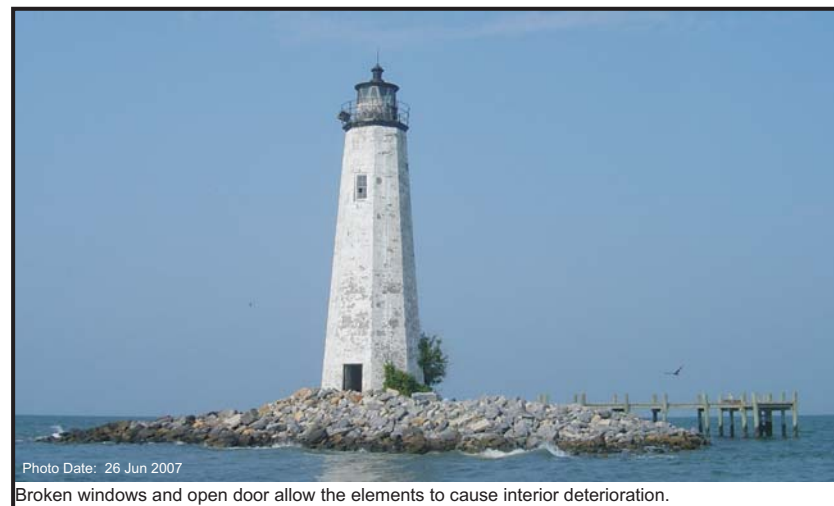


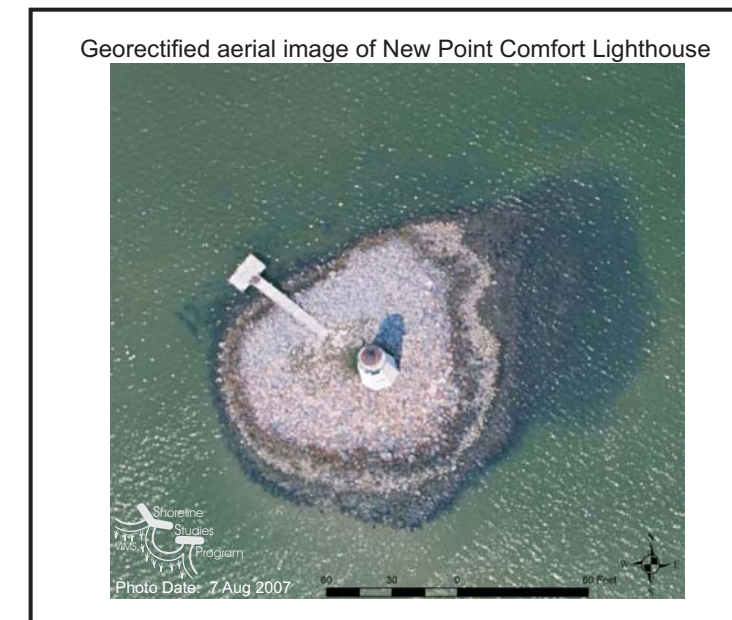
Photo Date: 26 Jun 2007  
Broken windows and open door allow the elements to cause interior deterioration.



Photo Date: 26 Jun 2007  
Peeling paint threatens the integrity of the sandstone structure. The sandstone is being worn away and the mortar between the joints is eroding.



Photo Date: 26 Jun 2007  
The small rock size of the present revetment provides little protection during storm events.



Georectified aerial image of New Point Comfort Lighthouse

Photo Date: 7 Aug 2007